



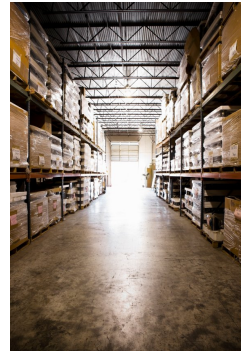
## What makes your warehouse tick?

Every business and warehouse or distribution centre works differently but have you ever pinpointed what makes your particular warehouse tick?

*What is the glue that keeps everything working, or perhaps not working?*

*It is the people, the processes, the layout, the technology or the products themselves?*

By understanding how it works, you can better understand how to make it work better. By understanding the lynchpin that keeps your orders flowing into and out of the warehouse you can plan and implement the most effective solution to make it even more efficient, productive and accurate.



It doesn't matter if you are working with a team of 100 or 1; whether your warehouse is a 10,000sqm or 100 sqm or if you deal with small, large, inexpensive or high value goods the fundamentals remain the same:

**Your people** are crucial to the success or failure of any processes in place; they are usually more willing to try new approaches and may already have experience in working with an automated inventory, warehouse or stock control systems.

**The processes** that determine how stock is received, how it is picked and how it is dispatched. These processes might have been in place for 2,5,10 or 50 years and have worked well in the past but, what changes can you make to ensure that errors rates are reduced, customer returns are negligible, and that your picking is done by priority and not by the pickers preference?

**The layout** of the warehouse also is affected by changing products, changing fast moving goods and picker's routes for picking. By implementing an automated system using RF scanning or voice efficiency improvements are assured, even from the initial assessment RFBS can advise on effective placement of your goods to optimize the time it takes to pick each order.

The wide range of **technology** available ensures that there is a product and software the increase productivity, effectiveness and efficiency to suit your business needs. However, it is vital to get an assessment of your warehouse to maximize your investment - the wrong hardware and solutions can be costly in the long run - getting it right first time creates the catalyst for improvements that grow as your company does.

Even your **products** can affect how well your company works - are there lots of little products that look the same that end up being sent out in error; or is it large high value items that are being 'lost' when it comes to stock take time? Automated systems can greatly reduce the risk of mis-picks, allow you to perform rolling stocktakes and reduce the amount of labour required each day to move each item through your facility.

An external review of your warehouse will open your eyes to a range of more productive workflows and provide you with the business case to implement time-saving technology. Call the RFBS team on 1300 136 419 to see how we can help.